

# NYCO<sup>®</sup> premium quality wollastonite

## NYCO SUPPLIES PREMIUM QUALITY WOLLASTONITE TO THE WORLD

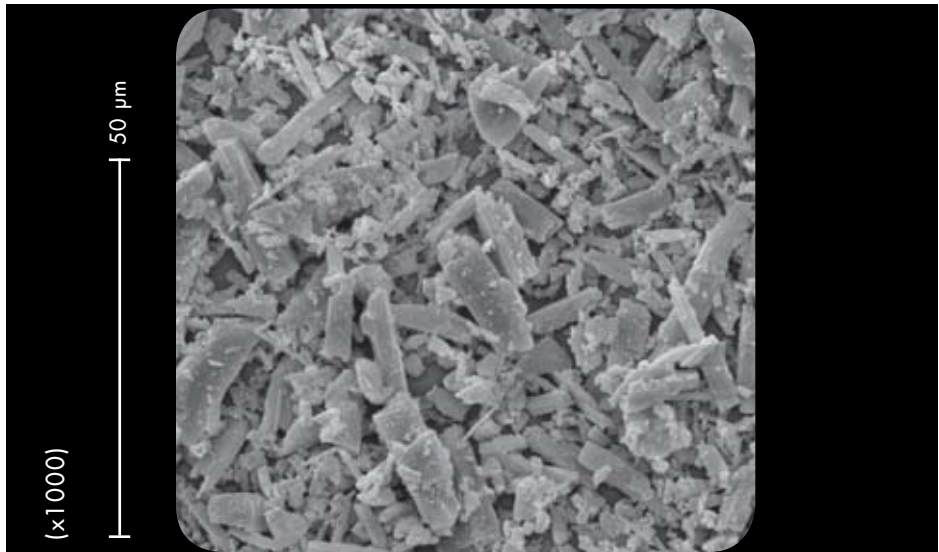
NYCO is not only the foremost supplier of wollastonite in the world, we are also the first...

Since our pioneering plant at Willsboro, New York opened in 1953, to our most recent development of a world class deposit in the Sonora desert of Mexico, NYCO has led the world in its growing acceptance of wollastonite.

- highest quality ores
- state of the art processing
- world class treatment facilities
- market leading reliability & technical service
- 100 plus years of reserves

This data contains general information and describes typical properties only. It is offered for use by persons qualified to determine for themselves the suitability of our products for particular purposes. No guarantee is made or liability assumed, the application of this data and the products described herein being at the sole risk of the user.

TYPICAL PROPERTY	TYPICAL VALUE	METHOD
G.E. Brightness	89	ASTM E97
Oil Absorption (lbs./100 lbs.)	27	ASTM D281
Fineness of Grind	>6	Hegman
Bulk Density		
Loose (lbs./cu.ft.)	39.0	ASTM C87
(g/cc)	0.62	ASTM C87
Tapped (lbs./cu.ft.)	54.0	ASTM C87
(g/cc)	0.87	ASTM C87
Median Particle Size (µm)	3.5	CILAS GRANULOMETER
Surface Area (m <sup>2</sup> /g) (BET)	2.9	ASAP 2405 (Micromeritics)
Minus 400 U.S. Mesh Screen (%)	100	Alpine Jet Sieve
Moisture (%)	0.25	Karl Fischer
Loss on Ignition (1000°C) (%)	5.50 (max)	ASTM D1208



# NYAD<sup>®</sup> MD1250

**CHEMICAL COMPOSITION: CaSiO<sub>3</sub>**

COMPONENT	TYPICAL VALUE (%)
CaO	46.00
SiO <sub>2</sub>	49.00
Fe <sub>2</sub> O <sub>3</sub>	0.26
Al <sub>2</sub> O <sub>3</sub>	0.16
MnO	0.02
MgO	0.55
TiO <sub>2</sub>	0.01
K <sub>2</sub> O	0.10
Wt. Loss (1000°C)	3.90

**TYPICAL PROPERTIES****VALUE**

APPEARANCE	WHITE
MORPHOLOGY	ACICULAR
MOLECULAR WEIGHT	116
SPECIFIC GRAVITY	2.9
REFRACTIVE INDEX	1.63
pH (10% SLURRY)	9.9
WATER SOLUBILITY (g/100cc)	0.0095
DENSITY (lbs./cu.ft.)	181
BULKING VALUE (gal./lbs.)	0.0413
MOHS HARDNESS	4.5
COEFFICIENT OF EXPANSION (mm/mm/°C)	6.5 X 10 <sup>-6</sup>
MELTING POINT (°C) - theoretical	1540
MELTING POINT (°C) -by ASTM D1857	1410

**nyco**<sup>®</sup>

One Mineral, A World Of Applications

**UNITED STATES**

P.O. Box 368  
803 Mountain View Drive  
Willisboro, NY  
12996-0368, USA  
Tel: (518) 963-4262  
Fax: (518) 963-1110

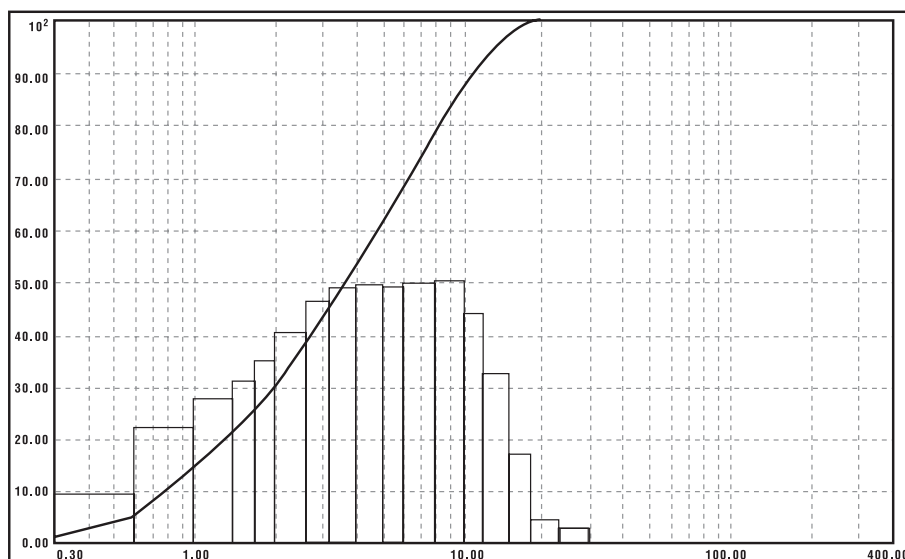
**EUROPE**

Belgium  
Tel: (32) 10 88 13 02  
Fax: (32) 10 22 65 99

**MEXICO**

Hermosillo, Sonora  
Mexico CP 83005  
Tel: (52) 62 89 10 00  
Fax: (52) 62 89 10 90

[www.nycomineral.com](http://www.nycomineral.com)  
[info@nycomineral.com](mailto:info@nycomineral.com)

**CILAS GRANULOMETER CURVE**

Technical data sheets on other wollastonite products and comprehensive health & safety information are available upon request.

**NYAD<sup>®</sup> MD1250**